

ON THE DISTRIBUTION OF OMPHALOCERA
OCCIDENTALIS B. AND BENJ. (LEPID.,
PYRALIDÆ, PYRALINÆ)

BY WILLIAM BARNES AND F. H. BENJAMIN

Decatur, Illinois

Omphalocera occidentalis B. and Benj.

1924, Barnes and Benjamin, Contrib. N. H. Lep. N. A., V, (3), 191,
Omphalocera.

Described from a holotype ♂, Clark County, Nevada, 24-30 June, and 1 ♂ paratype, High Rolls, New Mexico.

A fine pair have been received from Mr. Tom Spalding, taken at Eureka, Utah, July 4. The female is very similar to the male in coloration and maculation.

A NEW SPECIES OF PLASTOCERIDÆ IN THE
GENUS EUTHYSANIUS (COLEOPTERA)

BY VASCO M. TANNER

Brigham Young University, Provo, Utah

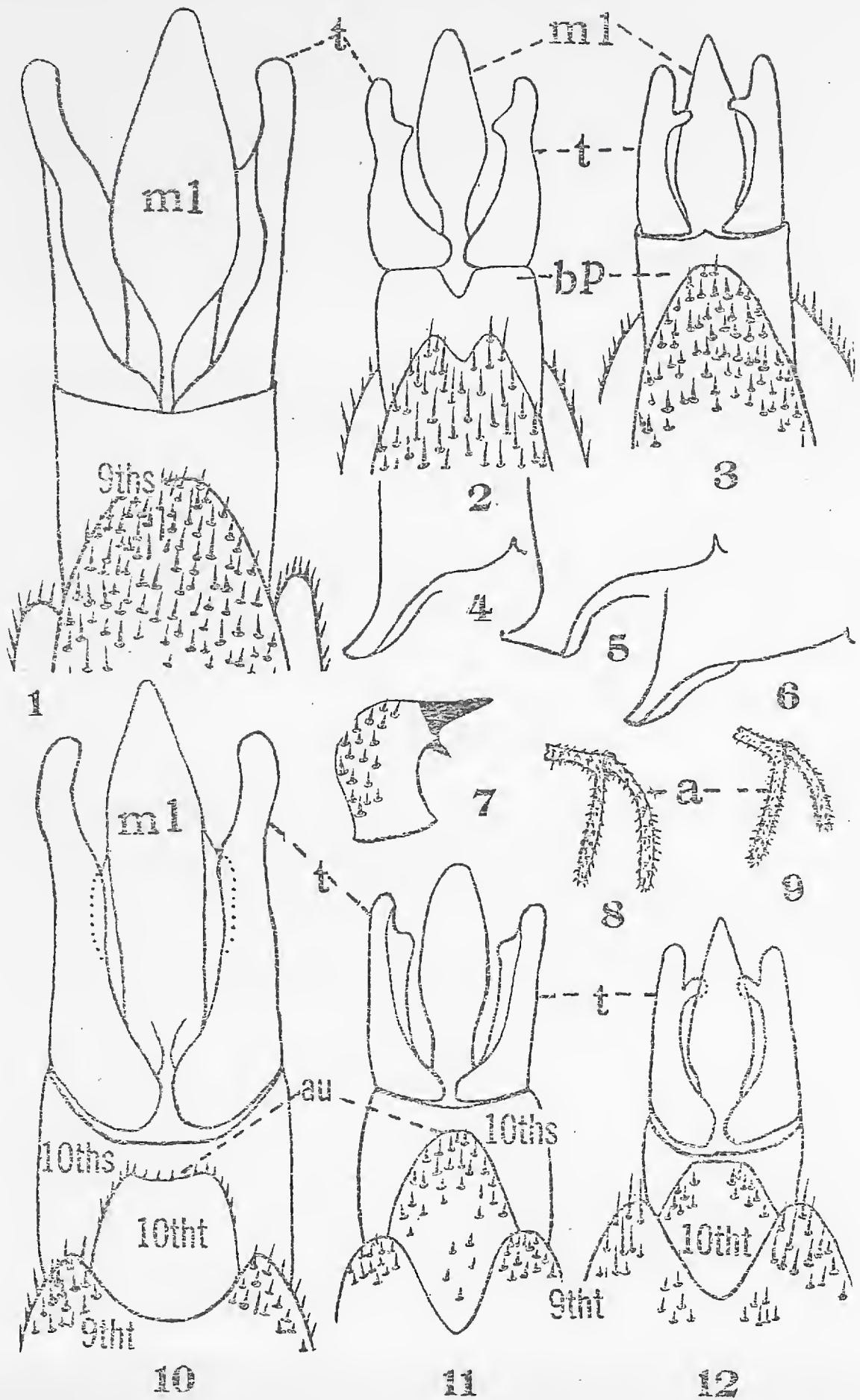
In 1853 Dr. John L. LeConte established the genus *Euthysanius* and described the species *lautus* as the type of the genus. In 1866 he described the species *pretiosus*, which was the second of the two species in this genus. These descriptions are brief and rather inadequate because important morphological characters are ignored. The genitalia of these species, for example, have valuable characters which may be utilized in separating them. Some of the recent workers in coleopterology have failed to base their descriptions upon definite morphological characters and as a result their descriptions are almost worthless. It seems much safer to work with many morphological characters than to split up groups and make new species on a few variable characters.

***Euthysanius blaisdelli* Tanner, sp. nov.**

(Figs. 2, 4, 7, 8 and 11)

Material studied: Three males, collected by the writer and Mr. Angus M. Woodbury in Zion National Park, Utah, August, 1925.

Male. General color a rather light brown. Length, 17-19 mm. Head broader than long; dorsal side pubescent and punctate; ventral with a few small setæ; maxillary palpi about half as long as the head, with long setæ at the distal end of each article; mandibles



(fig. 7) rather large with numerous stout setæ on the dorsal outer margin; antennæ (fig. 8) pectinate, very pubescent, reddish brown throughout; pronotum almost square, except for the posterior outer margins which extend back to the humeri (fig. 4); elytra about three times as long as wide, almost parallel, bearing numerous small pale setæ; legs long and slender, of uniform chestnut brown color; abdomen long and slender, the ventral side densely covered with small setæ, segmentation clearly discernible, there being ten tergites and ten sternites present; ædeagus leaving the body between the ninth and tenth sternites; genitalia (figs. 2 and 11) much like that of *E. pretiosus* Lec. (figs. 3 and 12).

In this species the ninth sternite is emarginate; in *E. pretiosus* Lec., to which it is most closely allied, it is not emarginate. The inner surface of the tegmen is very different in these two species, as is also the basal piece. The genitalia (figs. 1 and 10) and the antennæ (fig. 9) of *E. lautus* Lec. are noticeably distinct from those of the other two species.

Type, male, (No. 21) in my collection. Paratype in the collection of Dr. Frank E. Blaisdell, Sr. This species is named in honor of my good friend Doctor Blaisdell, who has contributed so much to my collection of Coleoptera.

LITERATURE

LeConte, John L.

1853. Revision of the Elateridæ of United States. Trans. Am. Philos. Soc. (2), X, pp. 405-408.

1866. New Species of North American Coleoptera. Smiths. Misc. Coll. VI, No. 167, 2d ed., pp. 1-177.

Sharp, D., and Muir, F.

1912. Comp. Anat. of Male Genital Tube in Coleoptera. Trans. Ent. Soc. Lond., pp. 477-642, pl. 42-78.

EXPLANATION OF FIGURES

Fig. 1. Ventral view of the genitalia of *Euthysanius lautus* Lec.

Fig. 2. Same of *E. blaisdelli* sp. nov.

Fig. 3. Same of *E. pretiosus* Lec.

Fig. 4. Posterior outer margin of pronotum in *E. blaisdelli*.

Fig. 5. Same in *E. pretiosus*.

Fig. 6. Same in *E. lautus*.

Fig. 7. Mandible of *E. blaisdelli*.

Fig. 8. Last two segments of the antenna in *E. blaisdelli*.

Fig. 9. Same in *E. lautus*.

Fig. 10. Dorsal view of the genitalia of *E. lautus*.

Fig. 11. Same of *E. blaisdelli*.

Fig. 12. Same of *E. pretiosus*.

ml.—median lobe.

t.—tegmen.

bp.—basal-piece.

au.—anus.

9ths.—ninth sternite.

10ths.—tenth sternite.

9tht.—ninth tergite.

10tht.—tenth tergite.